

# **Christ Church Walmersley and St John with St Mark Bury**

**The Church of England on Walmersley Road**



**June 2024**

# we listened



# we prayed

# we worshipped

and next month we will have more photos but ask and we can tell you more -  
of those who spoke, of topics for prayer,  
of prayer trails / tents and groups who were there to share  
but above all of how churches came together, from all denominations,  
to pray for our town and to spread the love of Christ through our communities



We invite you to join with the churches of Bury as we come together to worship God and pray for our town, our council, our communities, our schools, our businesses, our care providers, our Christian community.

## PRAYER IN THE PARK

**Saturday 18th May 1 - 4pm**

**CLARENCE PARK**

Interactive Prayer Trail  
Worship, Prayer & Testimony  
Refreshments from The Green Cafe



## *irrelevant? resigned? downhearted?*

---

As the days warm up, I cannot help thinking of holidays whilst preparing for services, sermons and making plans for our future walk together.

The other day I attended our Deanery Synod following a Ministerial Development training day where I had a revelation which I shared at a Wednesday service.



In my mind's eye I saw a swimming ring fully inflated and able to do the job it was made for - keeping a swimmer afloat. Then, I saw out of the corner of my eye, an old, discarded, partially inflated, dirty swimming ring.

It started me thinking about the Church in England at the moment. Many, like the old, discarded ring, see ourselves as irrelevant and useless. This is not how we should see ourselves as we have the same power in us that was given to the early Christians at Pentecost. At the Deanery Synod I couldn't help but feel that our Mission Community has an air of tired resignation in it. This frustrates me and prompts me to think of how we can re-energise the church within Bury.

We are in danger of no longer living the fully inflated life that God wants for His people. Rather like the tired, discarded, dirty and deflated life preserver, we are living rather tired and shabby lives. Is it any wonder that the world has problems with the message of the church when its people look so downhearted?

We need to plug in to the mains once more and recharge our faith batteries so we can become the people we are meant to be. Full of hope and love.

As we regain our confidence in the God who is the same yesterday, today and forever we will be in a much better place to become relevant to the world around us.

As I look at the two churches I have come to serve, I ask how connected are we to the people around us. We are doing many things and yet our influence is small. We need to look deep into ourselves and ask how we can become more relevant to the younger members of our parishes, and how we can share the life changing news of Jesus with them. I will be working with the ministry team and PCCs to further tease out how we can do this.

I write this just a few days before the Prayer in the Park event organised by Churches Together. What a wonderful, exciting opportunity to not only re-inflate our swimming rings by communicating with our God, but also a chance to reach out to those in our local area, offering prayer and support.



Just a month later, on the 29th June, we can build on this with the Big Church Picnic. Each church within the Bury Mission Community will offer an activity to the local families, working together to make connections with those who do not yet know Christ. Will you be there? Can you play your part? Because it is in being involved and taking part that your rings will become inflated. We can then be more effective in fulfilling the task Jesus has for each of us.

Till then, keep loving our community and showing this in every way you can. Remember that Jesus loves us so much that He gave His life for us and has left the Holy Spirit as our guide.

Blessings,  
Harvie

**FUNERAL SERVICE IN CHURCH**

May 15            Vanessa Hartley

**FUNERAL SERVICE AT THE CREMATORIUM**

May 10            Valerie Dawson

**INTERMENT OF ASHES**

May 5             Shelagh Beetson

*"I am the resurrection and the life....."*



---

***Flowers in church***

At Christ Church

Jun 2      Mr & Mrs N Silvester, in celebration of family marriages  
Jun 9      Mrs J Wood, in memory of the Beck family  
Jun 16     In memory of Wendy Riggs  
Jun 23     In memory of John Green  
Jun 30     Vacant

If you would like to donate towards the cost of the flowers in church for a specific week, perhaps in memory of a loved one or in celebration of a special event, please speak to Hazel Bamford (Christ Church) or Rosemarie Ashworth (St John with St Mark).



## ***BIBLE READINGS FOR JUNE***

---

Jun 2	<b>1<sup>st</sup> after Trinity</b>	Deuteronomy 5: 12-15	2 Corinthians 4: 5-12	Mark 2:23 – 3:6
Jun 9	<b>2<sup>nd</sup> after Trinity</b>	Genesis 3: 8-15	2 Corinthians 4:13–5:1	Mark 3: 20-35
Jun 16	<b>3<sup>rd</sup> after Trinity</b>	Ezekiel 17: 22-24	2 Corinthians 5: 6-10, 14-17	Mark 4: 26-34
Jun 23	<b>4<sup>th</sup> after Trinity</b>	Job 38: 1-11	2 Corinthians 6: 1-13	Mark 4: 35-41
Jun 30	<b>5<sup>th</sup> after Trinity</b>	Lamentations 3: 23-33	2 Corinthians 8: 7-15	Mark 5: 21-43
Jul 7	<b>6<sup>th</sup> after Trinity</b>	Ezekiel 2: 1-5	2 Corinthians 12: 2-10	Mark 6: 1-13

---

## ***Archdeacon's Visitations***

Particularly for Wardens, Sidespersons and PCC members

Monday 17 June

7.30pm

St. Peter, Bury

If this is inconvenient, there is another opportunity within the deanery

Monday 10 June

at 7.30pm

St Mary Rawtenstall

- \* We welcome Sally and Harvie to their new home and hope they will be very happy living in the Benefice of Walmersley Road.
- \* We congratulate Harvie, who this month will celebrate 25 years of his ordination as deacon, and we pray for his continued ministry.
- \* On the afternoon of Friday, 10<sup>th</sup> May the monies were received for the sale of the field at Christ Church. On Monday 13<sup>th</sup> Morris Homes began the task of clearing the site and in due course will build 41 homes there. The church no longer has any responsibility for this section of the field. We are looking forward to welcoming new families to the area.
- \* There is a very real need for the work of Porch Boxes at this time. Please do all you can to contribute – simply adding a couple of cans to your weekly shop will make a real difference if we all do it. A box is available at the back of both churches and there are lists of the items most needed. Also welcome are any 'bags for life' you can spare as the charity gives out around 80 bags each week.
- \* If you shop at Tesco, until 30 June one of the options for the blue tokens is Friends of Clarence Park.
- \* Both churches have contactless devices which provide a simple way to give each Sunday, or perhaps to make additional donations on specific occasions. Please speak to either Treasurer if you wish to make a regular contribution by envelope or standing order.

## *Magazine*

---



Please remember that the next issue of the magazine will be a double issue covering both July and August. Please consider what you need to publicise over the next couple of months.  
**The deadline is Friday 14th June.**

## ***In Memoriam: Val Dawson***

---

Val Dawson was one of our most popular and familiar characters in the life of St. John with St. Mark Church for over 40 years. Originally from Rochdale, Val moved to Bury with her family in the 1970's and soon settled in here in this Parish, and her home on Avondale Avenue near our day school was where she lived right up until her death in April 2024.

During the 80's and 90's, Val's normal service was the 10.30am Parish Eucharist. However, circumstances meant that Val found an earlier 8.00am Sunday service more convenient and she was a regular at that throughout the rest of her life. When the decision was made to amalgamate the 8.00am and 9.00am services and move to a new time of 8.30am, Val continued to worship with this new community of people and was always willing to provide lifts for those who needed them. Val was a faithful worshipper and also a regular attendee of the Wednesday morning service where she again made many friends.

Apart from worship, you could always rely on Val to be present at almost every fundraiser at Church. She had probably volunteered for every stall at both Fairs down the years and was most recently seen helping on cards and plants. She was never afraid to get stuck in with serving tea and coffee or refreshments. During the 1980's and 1990's she was on hand to provide back stage support with the Pantomimes. One of our regular cleaners, Val had an eye for detail and would make sure that any speck on the carpets, or cobweb under the windows, was removed when she saw them. Val struck up a good friendship with Joan Birch with this duty as they were on the cleaning rota together.

Always open and honest, you could rely on Val to provide constructive feedback and yes, criticism, when she thought it was needed. She was somebody to listen to as she knew so much about our Church community.

Away from Church life, Val's family were the most important thing to her, with children Tom and Maxine providing much loved grandchildren who she was so proud of, and every time you saw her there was always a story to tell about what they had been doing. Val also enjoyed baking and making home-made marmalade, which several Parishioners were treated to jars of.

At her funeral on 10th May the Reverend Ian Stamp asked how you could sum up 82 years in just a few moments. Well about as difficult as it is in this brief page in the magazine, but we thank God for everything Val Dawson did. May she Rest in Peace and Rise in Glory.



## ***The BIG Church picnic***

---

This is the first such event to be hosted by the ten churches of Bury Mission Community. The aim is to come together to have FUN and to show our community that the church in Bury is ALIVE.

It will take place in Clarence Park on 29 June from 11am to 2pm. So, for us it is easily accessible.

It is for all the family, and your friends and neighbours too.

Each church will be running activities – some aimed at the young, some for the young at heart, and some for those feeling less active.

There will be snacks and drinks available from The Green and the Tuck Shop but please bring a picnic, and maybe a chair or a rug.

This is a fantastic opportunity to show that the churches here in Bury (and especially here on Walmersley Road) are active and welcoming.

There are still lots of ways in which you can be involved if you wish (please just ask any church officers) and PLEASE help to share it as widely as possible with the help of flyers, posters and social media posts which are available.



Above all, please pray:

for the inspiration of the Holy Spirit as we prepare for this event;

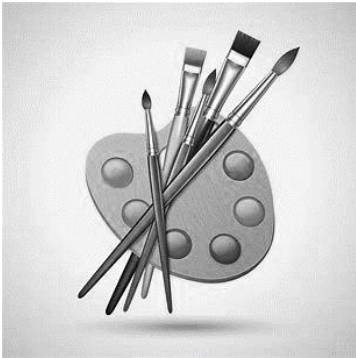
for the health and well-being of all involved;

for the weather – that it may be kind to us;

for families to have fun together and make memories;

for encouragement for all the churches;

and give thanks for this opportunity to work together to show God's love and to make connections with those in our communities.



## ***ART EXHIBITION***

---

Thank you to everyone who came to the Art Exhibition last month. It was enjoyable and successful, and we hope to repeat it in the future.

There are two art groups meeting in the Church Hall, one on Mondays between 10am and 12 noon, and one on

Wednesdays between 10am and 12 noon. The Monday group has closed for the Summer but hopes to reopen in September. New members would be welcomed. Please contact Margery Spencer.

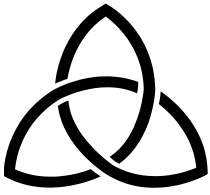
## ***BURY MISSION COMMUNITY***

---

On Saturday 18th May a small number from the Mission Community gathered at St. Mary in the Baum in Rochdale, to join in quiet reflection as we awaited the coming of the Holy Spirit on the Eve of Pentecost. The event was led by Reverend James Read and was mainly focused on the Stanley Spencer picture, 'Christ Rising from Sleep in the Morning'.

After an opportunity to engage with the picture and to react to it, the day then divided into 3 sessions, each linking to the picture and also some relevant Bible verses. We went away in silence on our own to a quiet place in the Church or the lawn to consider our thoughts within each of the 3 sessions; How we relate to and our relationship with God; Disaster and suffering and the new life which often comes from such events; Finding and being our true selves. There was a chance to review each of the 3 sessions with others if people wished to do so.

The time we shared at lunch was beneficial as we got to know one another better and learn more from each other. The day ended with a contemplative Eucharist led by James, who we thank for putting the day together for us.



## ***OPEN GROUP***

---

We gathered on Wednesday 8th May and were pleased to be joined by Harvie for his first Open Group meeting. I'm not sure what Harvie expected this group to be about, although we did have a rather different meeting this time as we made a start on putting together a contribution for the Scarecrow Festival at Christ Church in July.

I will not spoil anything by going into too much detail here as to who our character is, however we did have a very enjoyable evening as we came together with old clothes, props and ideas. I am pleased to say that we have an outline and additional touches need to be done, but hopefully we can reveal the final outcome over the next few weeks. We got to know Harvie a little better during the evening and vice versa.

We meet on Wednesday 12th June and Revd Ian Stamp will lead us in an evening with a few jokes. All welcome at 7.30pm in the Barritt Room.

David Robinson



## ***MEN OF THE BENEFICE***

---

The MOB met on Monday 29th April for an informal chat and get together at the Hark to Dandler on Walmersley Old Road. This was just an opportunity to enjoy somewhere a little different to our usual surroundings. The forthcoming Bury FC play-offs were heavily discussed. No further comment about that needed in this issue now though.....

We were not expecting to meet on the last Monday of May due to Bank Holiday and in June, Geoff Hamilton is likely to lead us on an evening stroll somewhere in the local area. This will be on Monday 24th June with an earlier start time of 7pm, and we will confirm on the weekly sheets.

David Robinson

### For World Environment Day (5<sup>th</sup> June)



May we always walk gently upon the Earth,  
in right relationship, nurtured by your love,  
open to the wind of the Spirit,  
taking only what we need,  
always open to the needs of others,  
making choices that bring wellbeing,  
living with generosity,

striving for justice, honouring all with reverence,  
reconciling and peace-making, mindful of those who will come after,  
recognising our proper place as part of your creation.  
Grant us the strength and courage, Lord,  
for such a radical transformation into your Kingdom.  
Amen.

*from Christian Aid*

### For Fathers and father figures (16<sup>th</sup> June)

*I kneel before the Father, from whom every  
family in heaven and on earth derives its name.  
(Ephesians 3: 14-15)*



We give thanks for the gift of families,  
in whatever form they may take.  
Lord, you have called us to love, serve and support each other.  
In times of joy, let us celebrate together;  
in times of sorrow, let us be a source of comfort;  
in times of trouble, let us uphold each other;  
and may God's peace and love be always with us.  
Amen.

*adapted from a Mothers' Union USA member*

### **For World Refugee Day (20<sup>th</sup> June)**

Almighty and merciful God,  
whose son became a refugee  
and had no place to call his own;  
look with mercy on those who today are  
fleeing from danger, homelessness and hunger.  
Bless those who work to bring them relief;  
inspire generosity and compassion in all our hearts;  
and guide the nations of the world towards that day  
when all will rejoice in your Kingdom of Justice and of Peace;  
through Jesus Christ our Lord  
Amen



*from Prayerist.com*

### **For those being ordained (Petertide)**

God our Father, Lord of all the world,  
through your Son you have called us into the  
fellowship of your universal Church:  
hear our prayer for your faithful people  
that in their vocation and ministry  
each may be an instrument of your love,  
and give to your servants now to be ordained  
the needful gifts of grace;  
through our Lord and Saviour Jesus Christ,  
who is alive and reigns with you,  
in the unity of the Holy Spirit,  
one God, now and for ever. Amen.



*Collect from the ordination service, Common Worship*

### **For the BIG Church Picnic (29<sup>th</sup> June)**

Please see page 9 if you would like some prayer pointers.

As this year goes by, angels will feature regularly in our reports. Members and friends spent a lively evening learning more about the project; knitting, stitching up and, naturally, having a good natter. At the end of the evening, we were able to move the angel up the 'stairway to heaven' (see Genesis 28) as far as the '50' step. As I write this there are 95 completed angels and many more in production - watch this space (or why not join in!)



Barbara Jack spoke to us about the need she and a colleague recognised in 1994, that although there was help available for adults with addiction issues, there was nothing aimed at helping young people. Early Break was set up with a dedicated phone line and an office in a garden shed, became a registered charity in 1997, and soon expanded from Bury to include Rochdale. Now it works across Greater Manchester, helping young people, together with their families. Barbara brought display cases which help to recognise different drugs, was happy to answer our questions and to speak confidentially to individuals. We look forward to her return in the future and thanked her in part with donations of about £30 which Barbara said would go to their wellbeing fund. This is used, for example, to buy new shoes or pay for a haircut for a young person going for a job interview. Read more about this charity, now celebrating 30 years of its existence, at <https://earlybreak.co.uk>

Several branch members attended Spring Council, held again at St John's House. Council meets twice a year and everyone is welcome. It is a great opportunity to learn what is happening in the diocese and beyond, to hear more about our projects, to worship together, and to share fellowship. There is the opportunity to browse the cards, literature and gifts stocked in our shop and chat with other members over a packed lunch. Usually there is at least one speaker talking about a project supporting families.



This time, those who had to leave at lunchtime missed an extremely powerful drama about the various types of domestic abuse. Press Red has

presented this in numerous and varied venues, including the Home Office and Lambeth Palace. Read more about the organisation at <https://pressred.org>

Bury and Rossendale members held a Deanery Festival at St Mary Rawtenstall, where 8 new members were admitted. The Area Dean, Donna Williams preached and said publicly that she would be joining – we wait with eager anticipation to welcome her to our worldwide movement.

Everyone is most welcome to join us for our meetings in June. There is no pressure to join, just come along and be assured of a warm reception.

Rachel Mann, then Area Dean but now Archdeacon of Salford and Bolton, spoke to us previously about Living in Love and Faith. She offered to return to talk more about herself and her life and will do so on 5th June at 7.30pm in the Hall.

On 19<sup>th</sup> June we welcome one of our own members, Rosemary Taylor, with her friend Janet Taylor, to show us a little of their recent trip to “Follow the Mekong” though Thailand, Cambodia and Vietnam with some of the sights they saw and sites they explored. Again, we meet at 7.30pm in the Hall.

At this point we have not decided on the character(s) for this year’s scarecrow festival, so if you have any ideas *please* share.

If you would like to know more about Mothers’ Union and its work, speak to our members, come along to any of our meetings, check out our noticeboards in church and hall, or visit [MothersUnion.org](https://MothersUnion.org)

Barbara Taylor,  
Branch Secretary

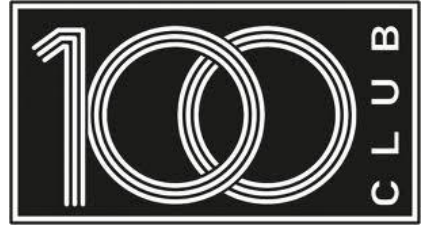
## ***ST. JOHN WITH ST. MARK 100 CLUB***

---

### **May 2024 draw winners:**

1st Prize £15.00 – Rosemarie Ashworth

2nd Prize £10.00 – Kelly Watson



### **Congratulations to both**

Next month will see our last draw for the year and payment to rejoin will start in July. We have given £370.00 to Church and thanks to all who have made this possible.

## ***THURSDAY LIGHT LUNCH***

---



Come and join us on the third  
Thursday of every month  
for a light lunch.

A chance to enjoy a chat  
in the company of friends.

Lunch is served 12 noon – 1pm.

Christ Church Walmersley Hall, School Lane, BL9 5LP

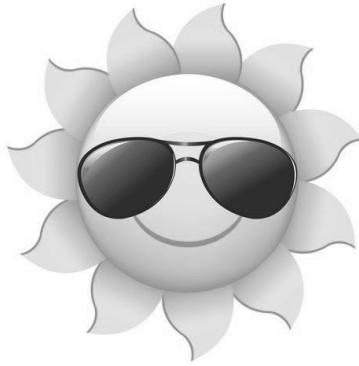
**There is no charge** – though, if you can,  
a donation toward costs would be appreciated.

Any profit will go to charity or church funds.

***It would be great to see you!***

So come along on 20 June, 18 July





# *ST. JOHN WITH ST. MARK SUMMER FAIR*

**Saturday 22nd June**

**from 11.00am**

**in the Church Hall**

**In aid of Church funds**

**BOOKS      TOMBOLAS & RAFFLE      TOYS**  
**JIGSAWS   CAKES      CARDS & GIFTS**  
**PLANTS    OTHER STALLS**  
**LUNCHES & REFRESHMENTS**

**ANY DONATIONS FOR STALLS CAN BE BROUGHT TO THE CHURCH OR CHURCH HALL ANY TIME AND ANYONE WHO WOULD LIKE TO OFFER HELP ON THE DAY, PLEASE SPEAK TO THE WARDENS.**



# Sunday



# @ Seven



**We next meet for our time of informal worship**

**June 30th at  
Salvation Army**

## Forever Thankful

**- a time of thanksgiving**

**Come and join us for an hour,  
at the Citadel on Brookshaw Street  
- or you can be with us via Zoom.**

**Please contact Nigel Silvester or Ian Banks  
for more details.**

## ***Think differently about “disability”***

---

### **Take a moment to consider:**

- Do you understand what disability is?
- How confident are you talking about disability?
- Do you think you operate in a way that is accessible to all people?
- Do you understand your responsibilities towards accessibility?

When: **Tuesday July 23rd 19:30-21:00**

Where: **St John with St Mark's Hall**

### **What will be in the session:**

- Models of disability, equality and equity
- Universal Design
- The language we use, attitudes and mind-sets
- A chance to ask questions without judgment

### **ACCESSIBILITY OF OUR SESSIONS**

We at Caritas, believe that everyone should have opportunity to participate in all activities. This includes people who use our services, employees and volunteers. Together we will work alongside individuals to find inclusive ways of working that suit them best. We seek to welcome, integrate, and support the participation of all people by making our projects accessible. If you face barriers because of your physical, mental & emotional learning, sensory and/or communications needs, please let us know.

### **BOOKING**

To book your place on the training or ask a question, please email [Minna](mailto:Minna@caritassalford.org.uk) directly.

Dr Minna Moffatt-Feldman,  
Accessibility Co-ordinator, Caritas  
[M.Moffatt-Feldman@caritassalford.org.uk](mailto:M.Moffatt-Feldman@caritassalford.org.uk)

## **REGULAR SERVICES**

<b>Sunday</b>			
8.30am	3 <sup>rd</sup>	Holy Communion	St John w St Mark
9.00am	All	Holy Communion (BCP)	Christ Church
10.30 a.m.	1 <sup>st</sup> 2 <sup>nd</sup> 3 <sup>rd</sup> 4 <sup>th</sup>	Holy Communion Family Service Holy Communion Morning Worship	Christ Church
10.30 a.m.	1 <sup>st</sup> 2 <sup>nd</sup> 3 <sup>rd</sup> 4 <sup>th</sup>	Holy Communion Holy Communion Morning Worship Holy Communion	St John w St Mark
10.30 a.m.	5 <sup>th</sup>	Holy Communion	Joint (venue tba)
7.00 p.m.	Final, Sunday @ Seven		Venue tba
<b>Wednesday</b>			
10.00 a.m.	Holy Communion		St John w St Mark
<b>Thursday</b>			
12.30 p.m.	The Gathering		Zoom
7.30 p.m.	Holy Communion		St John w St Mark
Other services as announced.			
Services are from Common Worship unless otherwise stated.			

If you need transport to church please contact the wardens.

St John with St Mark's Church has Fairtrade status



We are members of Manchester's Transforming Prayer Community

Personal details have been removed in our online edition for data protection purposes.

Please contact us through our websites or social media accounts and we will ensure your message reaches the correct person.

Enquiries about baptisms or weddings / marriage banns etc or any other matter, should be made at the Parish Office held at St.John with St.Mark Church Hall, Parkinson Street any Wednesday evening between 6.30-7.00pm.

Lots more info on our websites:	<a href="https://ccwalmersleybury.org.uk">https://ccwalmersleybury.org.uk</a> <a href="https://stjohnstmarkchurchbury.com">https://stjohnstmarkchurchbury.com</a>
Check out Facebook	@christchurchwalmersley @stjohnstmark
X (formerly Twitter)	@cofewalmersley
Instagram	cofewalmersley
and YouTube	CofE Walmersley

## FOR YOUR JUNE DIARY

---

Sun 2		<b>1<sup>st</sup> after Trinity</b>
	9.00am	Holy Communion BCP (CC)
	10.30am	Parish Communion (both)
Wed 5	7.30pm	Mothers' Union (CC Hall)
Sun 9		<b>2<sup>nd</sup> after Trinity</b>
	9.00am	Holy Communion BCP (CC)
	10.30am	Family and Parade Service (CC)
		Parish Communion (SJM)
Mon 10	7.00pm	Big Church Picnic planning (Barritt Room)
Wed 12	7.30pm	Open Group (Barritt Room)
Sat 15	9.30am	Diocesan Synod (SJH)
Sun 16		<b>3<sup>rd</sup> after Trinity</b>
	8.30am	Holy Communion (SJM)
	9.00am	Holy Communion BCP (CC)
	10.30am	Morning Worship (SJM)
	10.30am	Parish Communion (CC)
Mon 17	7.30pm	Archdeacon's Visitation (St Peter)
Wed 19	7.30pm	Mothers' Union (CC Hall)
Thu 20	12noon	Thursday Lunch (CC Hall)
Sat 22	11.00am	Summer Fair (SJM Hall)
Sun 23		<b>4<sup>th</sup> after Trinity</b>
	9.00am	Holy Communion BCP (CC)
	10.30am	Parish Communion (SJM)
		Service of the Word (CC)
Mon 24	7.00pm	Men of the Benefice Walk
Sat 29	11.00am	BIG Church Picnic (Clarence Park)
Sun 30		<b>5<sup>th</sup> after Trinity</b>
	9.00am	Holy Communion BCP (CC)
	10.30am	Joint Parish Communion (SJM)
	7.00pm	Sunday@Seven (SA)

# SCARECROW FESTIVAL '24

## Childrens' book characters

**July 11th onwards**

**Christ Church Walmersley**



any donations will support  
Jigsaw Bury

***Please take part***  
***as a group, family, business,***  
***neighbourhood, on your own***



More details at

**CCWalmersleyBury.org.uk/Scarecrows**



Bury Mission Community  
welcomes you to

# the BIG church picnic



- compete in a mini decathlon
- take part in gentler activities
- check out the cafe
- use space for reflection
- share in the FUN

fun for  
all ages

Clarence  
Park

bring  
a picnic

11am  
to  
2pm

Sat  
June  
29th

Bring family and friends